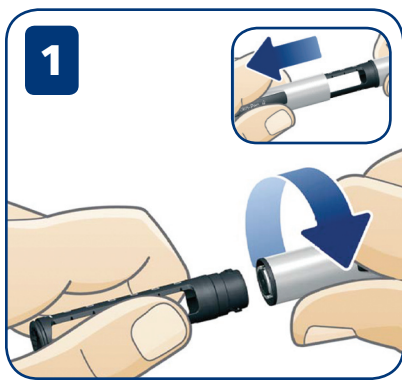
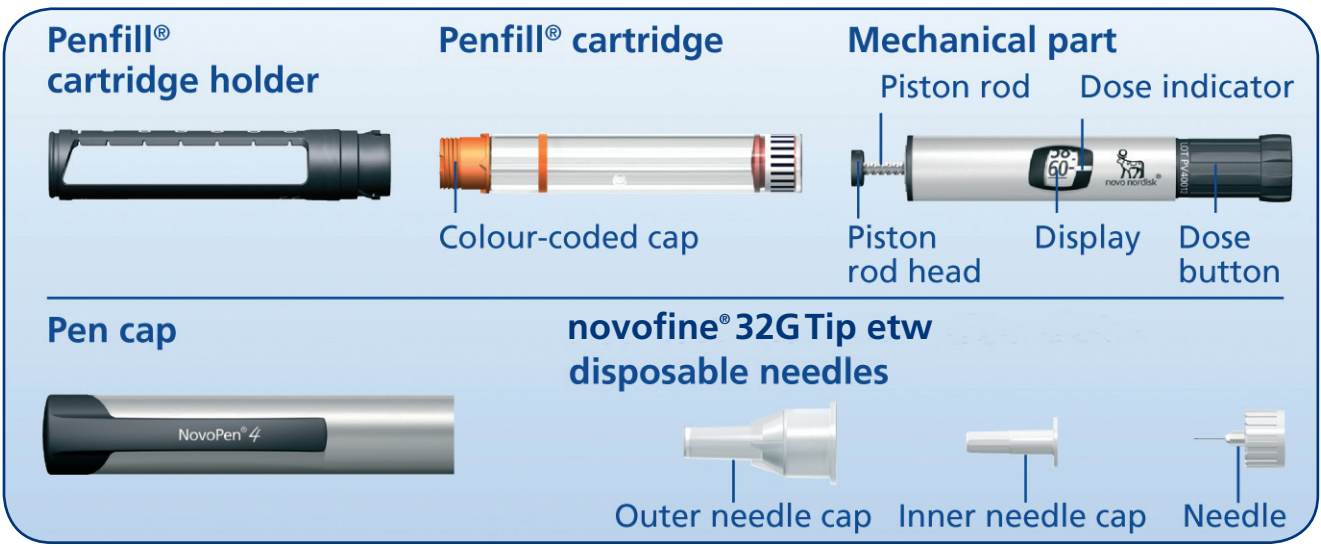
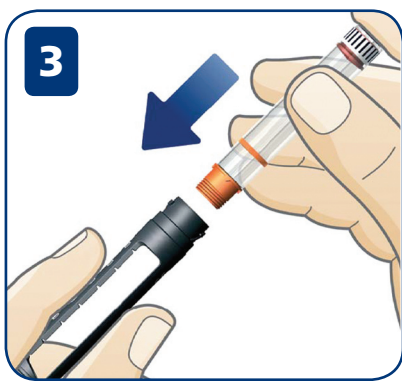


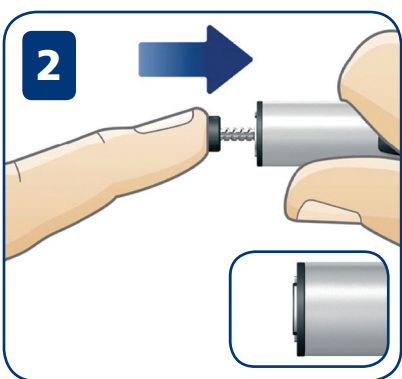
NovoPen® 4 Quick Guide



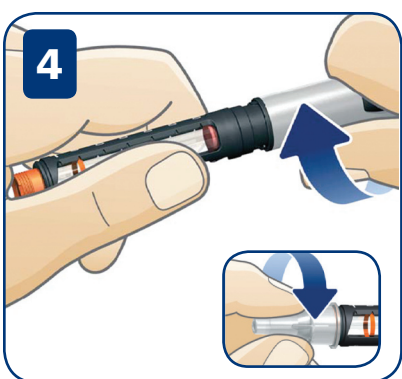
1 Pull off the cap. Unscrew NovoPen® 4.



3 Insert the Penfill® cartridge into the cartridge holder, colour-coded cap end first.



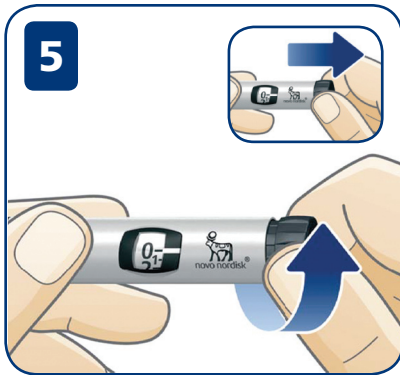
2 Return the piston rod by pressing the piston rod head in until it stops.



4 Screw NovoPen® 4 together. Always re-suspend cartridges containing insulin suspensions before use. Screw on a new NovoFine® disposable needle tip. Pull off the outer and inner needle caps. Dispose of inner needle cap.



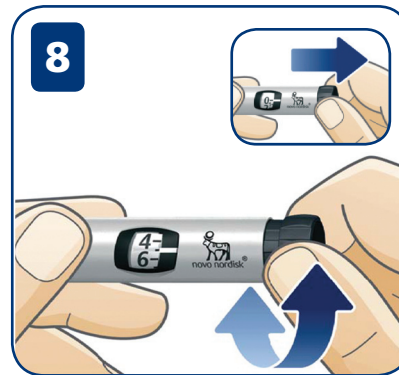
NovoPen® 4 Quick Guide



5 Priming

Check the insulin flow before each injection.

- Pull out the dose button
- Turn it to select:
 - 4 units with a new Penfill® cartridge
 - 1 unit with a cartridge already in use



8

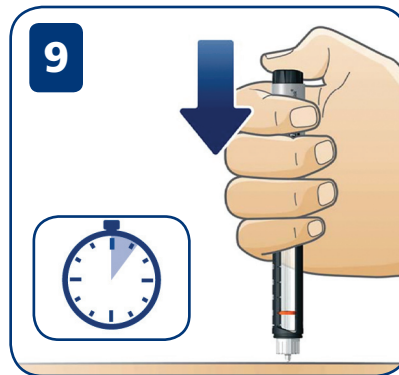
Selecting the dose

Pull out the dose button and turn it until your required dose lines up with the dose indicator.



6

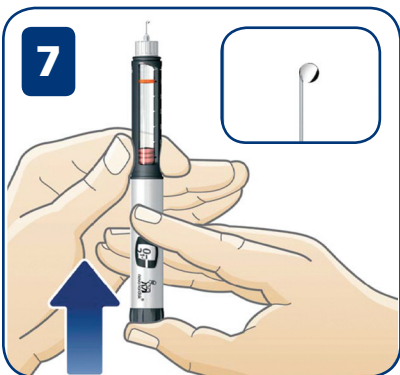
Hold your NovoPen® 4 with the needle pointing upwards.
Gently tap the cartridge holder a few times.



9

Making your injection

- **Press** the dose button completely in, until you hear or feel a click
- **Turning** it will **not** inject the insulin
- Leave the needle under the skin for **at least 6 seconds**
- Withdraw the needle
- Replace the outer needle cap onto the needle and dispose of them
- Replace pen cap



7

Press the dose button in until you hear or feel a click. The display will return to 0.
A drop of insulin **must** appear at the needle tip.
If not, repeat steps 5 to 7 until a drop appears.

Need help?
Call 1-800-465-4334

Visit novopen4.ca to learn about using NovoPen® 4 and watch instructional videos.

All trademarks owned by Novo Nordisk A/S and used by Novo Nordisk Canada Inc.
Novo Nordisk Canada Inc., 300-2680 Skymark Avenue, Mississauga, Ontario L4W 5L6.
Tel: (905) 629-4222 or 1-800-465-4334. www.novonordisk.ca

